

# Plinius Arataki

## SQ Blaster Set Up – PC

With an SQ Blaster Plus installed on your network, Arataki functionality increases. A Plinius 'system remote' appears to the left of the Arataki player/renderer panel.

Pressing the buttons on the system remote sends wireless signals from the iPad to the SQ Blaster Plus. The SQ Blaster Plus then converts these signals to infra red to control your Plinius audio system components.

To setup the SQ Blaster Plus on a PC for the first time and enable this system remote feature, follow these simple steps.

### 1. Download the SQ Blaster software to your computer

- » Visit the Plinius Website [www.pliniusaudio.com](http://www.pliniusaudio.com) to download and save the USB drivers and setup wizard, and read the instructions for use. Extract or unzip the zip file (sqblaster-install-win-2v3.zip).

### 2. Run the driver file to install USB drivers

- » Run the driver file (CDM20814\_Setup(WIN).exe) to install windows USB drivers.

### 3. Restart the computer

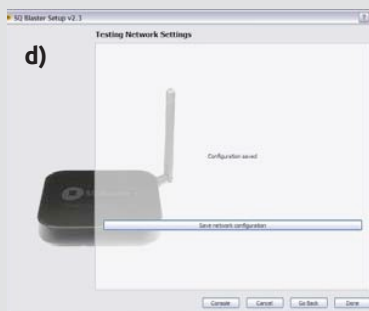
- » Restart the computer to complete USB driver installation.

### 4. Connect the SQ Blaster Plus to the computer

- » Connect your blaster unit with the USB cable to your computer only **after** installing the USB drivers. This **MUST** be done **before** running the wizard.

### 5. Run the SQ Blaster setup wizard

- » Running the setup wizard (sqblaster-install.exe) will connect the SQ Blaster Plus your network.



a) The setup wizard will detect the blaster. Press 'Continue' when the blaster is found.

b) Details of the blaster and current network (where applicable) will be shown. Press 'Continue'

c) Details of available networks will be shown. Select the network of the audio system and enter the passphrase (password or network key). Press 'Continue'.

d) The network details will be stored in the SQ Blaster. Press 'Save Network Configuration'. Press 'Done'.

**The SQ Blaster Plus is now ready for use and the remote will appear when Arataki is launched.**