

Plinius Inspire Integrated Amplifier USB Driver Installation

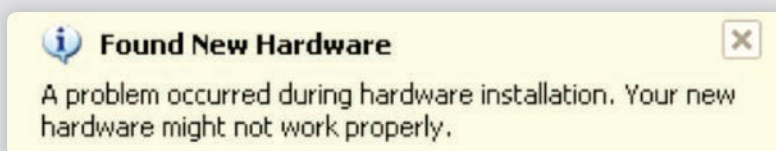
The USB input of the Inspire 880 and Inspire 980 integrated amplifier is supported by the following operating systems:

- Windows XP – using the provided driver
- Windows 7 (32 and 64 bit) – using the provided driver
- Windows 8 (32 and 64 bit) – using the provided driver
- Windows 10 (32 and 64 bit) – using a driver built into the operating system
- MacOS (10.6.4 and later) – using a driver built into the operating system.

Windows XP USB Driver Installation:

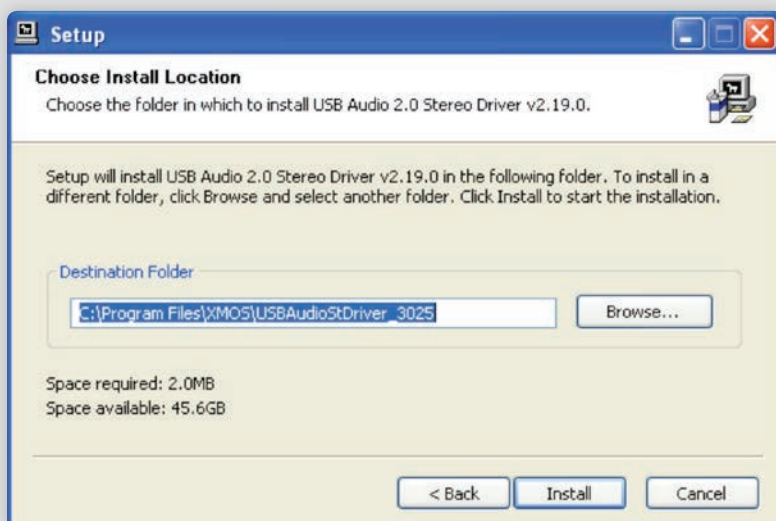
1. Connect the Inspire Integrated Amplifier to your computer using a USB A to USB B cable.

- » Power up the Inspire Integrated Amplifier and select the USB input.
- » Windows does not include drivers for this device, so you will be notified that the device has not installed properly.



2. Run the file **XMOS USB Audio Class 2.0 driver (3.20.0).exe**.

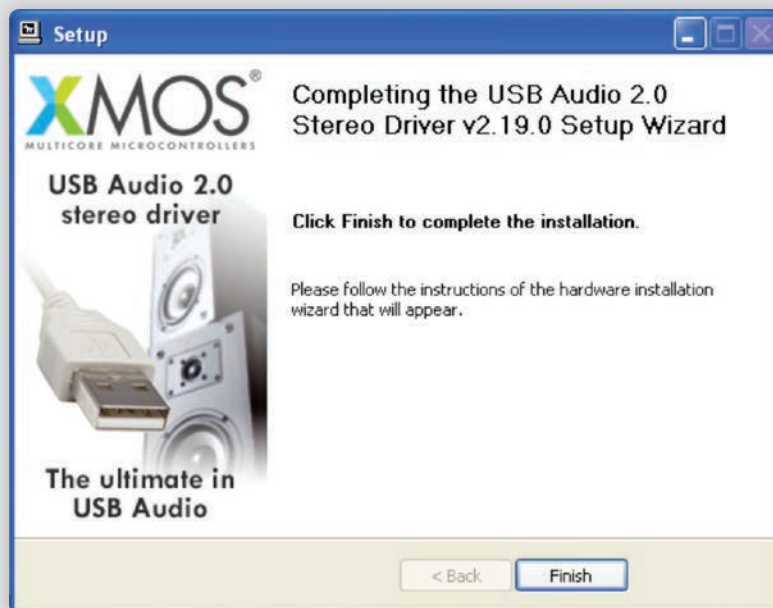
- » Press *Next*, the driver will check that an Inspire Integrated Amplifier is connected to your computer.
- » Accept the driver agreement and chose where to store the driver.
- » Press *Install*.



Plinius Inspire Integrated Amplifier USB Driver Installation

Windows XP USB Driver Installation (Continued):

3. Allow the installation to finish, then press **Finish**.



4. A Found New Hardware Wizard window will now open.

» Select the *No, not this time* radio button and press *Next*.



Plinius Inspire Integrated Amplifier USB Driver Installation

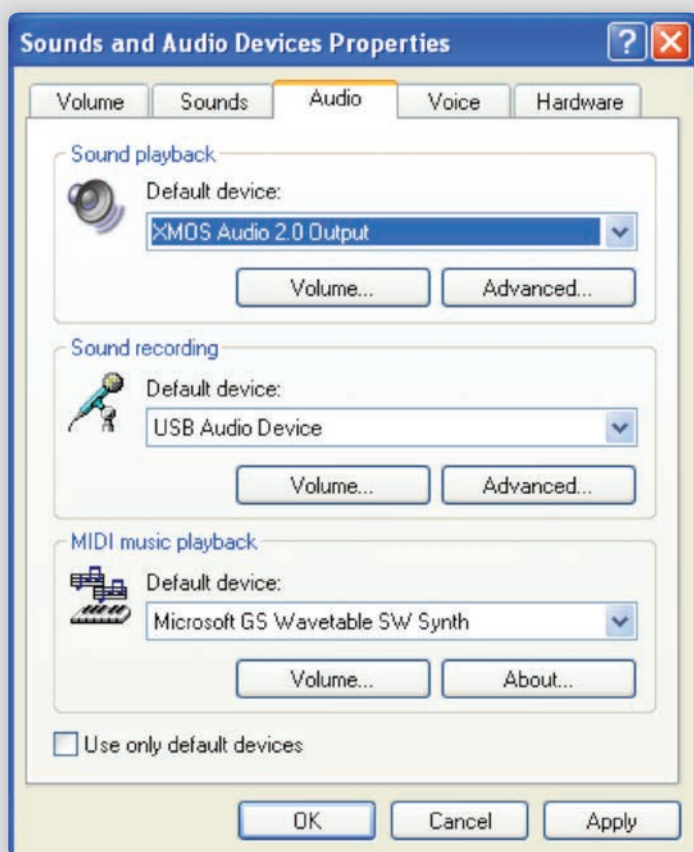
Windows XP USB Driver Installation (Continued):

5. Select the **Install the software automatically (Recommended)** radio button and press **Next**.

- » Once the Found New Hardware Wizard has finished transferring the files, press *Finish* to complete the driver installation.

6. The driver is now installed.

- » Open the *Control Panel* and open *Sounds and Audio Devices* to select the Inspire Integrated Amplifier's USB input as your computer's active audio output.
- » Select the *Audio* tab.
- » Select *XMOS Audio 2.0 Output* from the *Default device* dropdown box.



The Inspire Integrated Amplifier will now be selected automatically as the active audio output when it is connected and out of standby. When the Inspire Integrated Amplifier is in standby or not connected, your standard audio hardware will be active.